



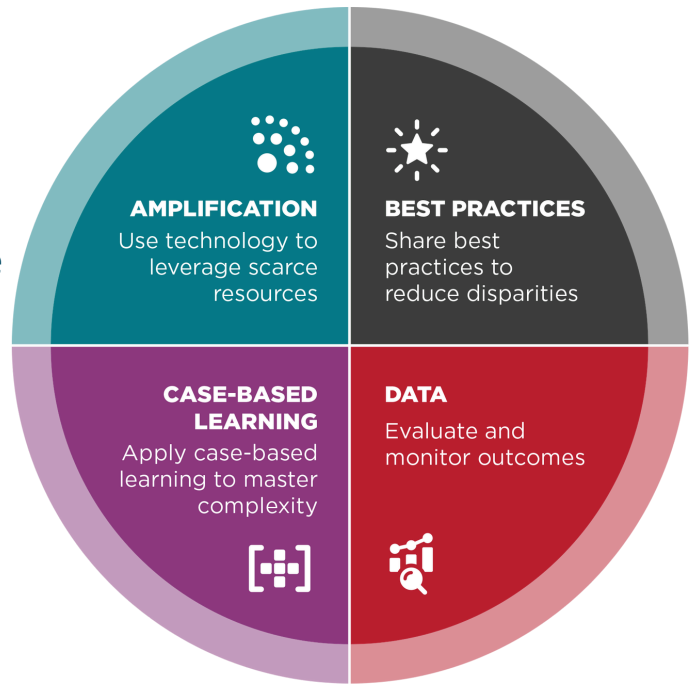
Project ECHO at NEOMED

Building Expertise and Enhancing Care Delivery

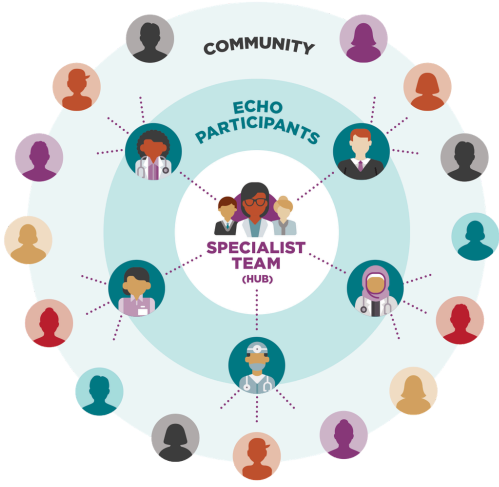
Project ECHO Overview

Project ECHO® is a model for lifelong learning and guided practice that revolutionizes continuing medical education and exponentially increases workforce capacity. Inter-professionals collaborate to provide best/promising-practices in specialty care and reduce health disparities.

Inspired by the way clinicians learn from medical rounds during residencies, the ECHO Model® has evolved into a learning framework that applies across disciplines for sustainable and profound change.



ALL TEACH, ALL LEARN



ECHO participants engage in a virtual community with their peers where they share support, guidance and feedback. As a result, our collective understanding of how to disseminate and implement best practices across diverse disciplines continuously improves and expands.

Scan to become a Project ECHO participant



Contact Us

neomedecho@neomed.edu www.neomed.edu/ProjectECHO

Project ECHO at NEOMED Programs

These sessions are open to the interprofessional healthcare community:

Deflection ECHO

Providing a health-facing response to substance use that engages, deflects, and supports strong community partnerships

Geriatric Resources Ohio Workgroup (GROW) ECHO

Providing education and consultation to facilitate best practice care for older adults

Integrated Care @ NEOMED (IC@N) ECHO

Providing integrated primary & mental health care education to promote integrated, team-based care

Ohio Systems of Care ECHO

Addressing complex needs of children, youth and families served by Ohio Systems of Care for youth involved with multiple systems

SZconsult ECHO

Providing consultation, case-based learning, and continuing medical education credit to medical professionals

who care for people affected by schizophrenia-spectrum disorders

First Episode Psychosis ECHO

Network of Coordinated Specialty Care for First Episode Psychosis team members & other Ohio clinicians

These sessions are limited to trained participants:

Cognitive Behavioral Therapy for psychosis and Family Systems ECHO

CBT-p trained clinicians expand their knowledge and practice their skills

Project ECHO at NEOMED by the Numbers:

ECHO Sessions:



1203

Individual
Participants:



1235

Learning Hours:



1296

Cases/Situations
Presented:



900+

**Scan to register for
Project ECHO at
NEOMED programs**

