

Campus Safety: Prevention with a Purpose

Joseph A. Hendry, Jr., PSP, CLEE
Navigate360

TODAY'S SUBJECT MATTER EXPERT



Joseph A. Hendry Jr., PSP, CLEE

Senior Director, On-Site Services
Navigate360
jhendry@navigate360.com

Joe was named by the Ohio Department of Homeland Security and Ohio Attorney General's Office as an expert in civilian and law enforcement response to active threats. He is an ASIS International member with PSP® certification appointed to the School Safety and Security Community Steering Committee. He served six years in the United States Marine Corps and 27 years with the Kent State Police Department. He is a Best Recommended Expert Service Provider for the Insurance Industry and holds a Bachelor's Degree in Telecommunications.

Currently, Hendry is a principal appointed to the Cross Functional Emergency Preparedness and Response (ACT-AAA) Committee for NFPA 3000 to write the national standard for civilian, law enforcement, fire service and emergency medical services. He was issued the classification of Special Expert by NFPA.

We are Navigate360: but you may know us by another name...

2019

ALICE



2020



SchoolCheckIN



Social
Sentinel



iCampus



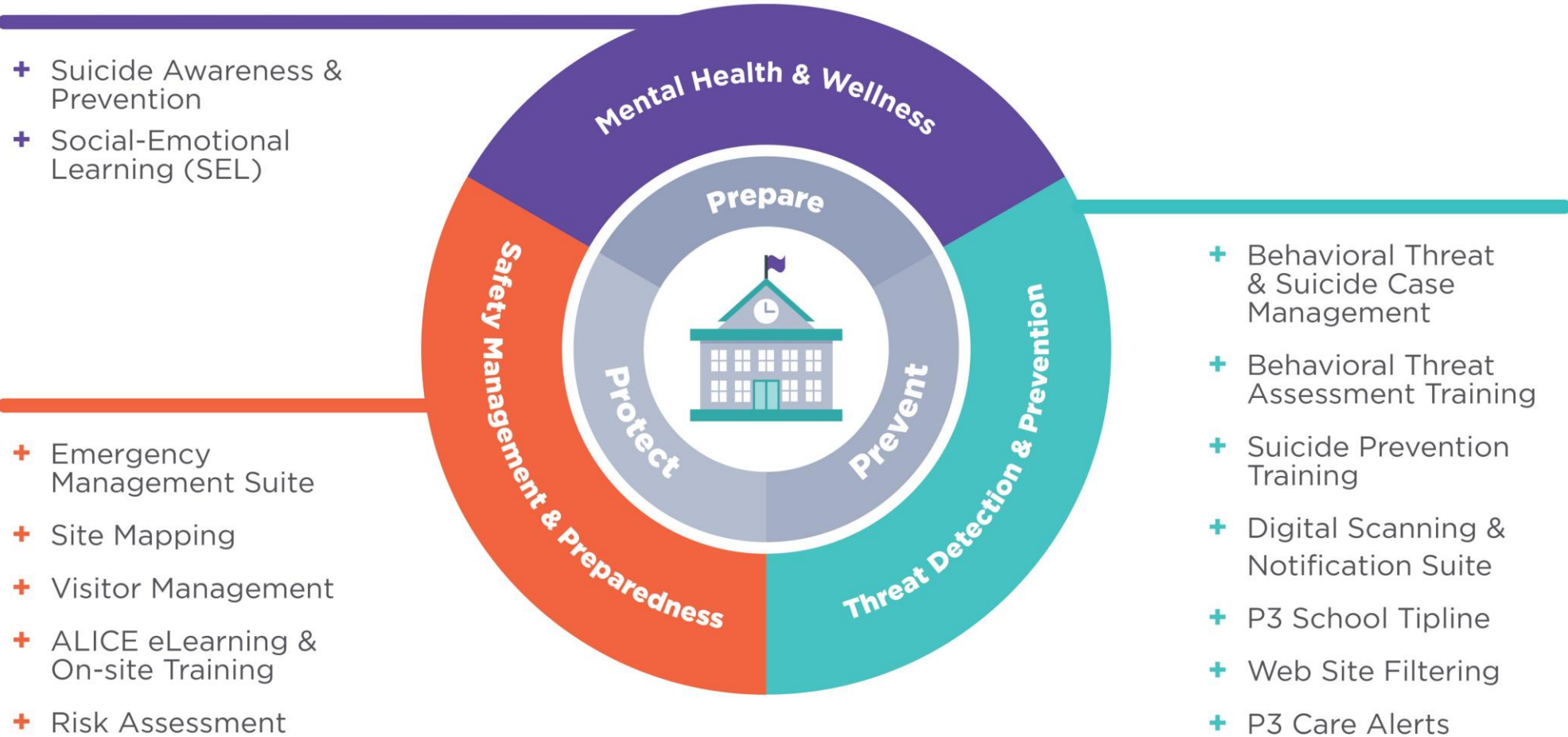
Evolution Labs
Power to Engage™

PRESENT DAY



Navigate**360**

School Safety & Wellness Solutions that Work Better Together



Navigate360's Solutions Are Used Nationwide



35,000+
school buildings



4,400
businesses



900
government agencies



5,000
law enforcement
agencies



1,425
healthcare facilities



750
houses of worship

Resulting in:

18,900,000+
People prepared across all
50 states

Millions
of tips submitted, most
commonly reporting suicide
threats, bullying/cyberbullying
and drugs

2,100,000+
K-12 students recorded with
one-click accountability

Key Takeaways



- 1** Creating a culture of safety on your campus through cross-functional collaboration.
- 2** Schools must be prepared to support students through mental health crises with compassion.
- 3** Effective threat detection & prevention requires a comprehensive approach.
- 4** Students should be encouraged & equipped to speak up.



Building a Culture of Safety on Your Campus

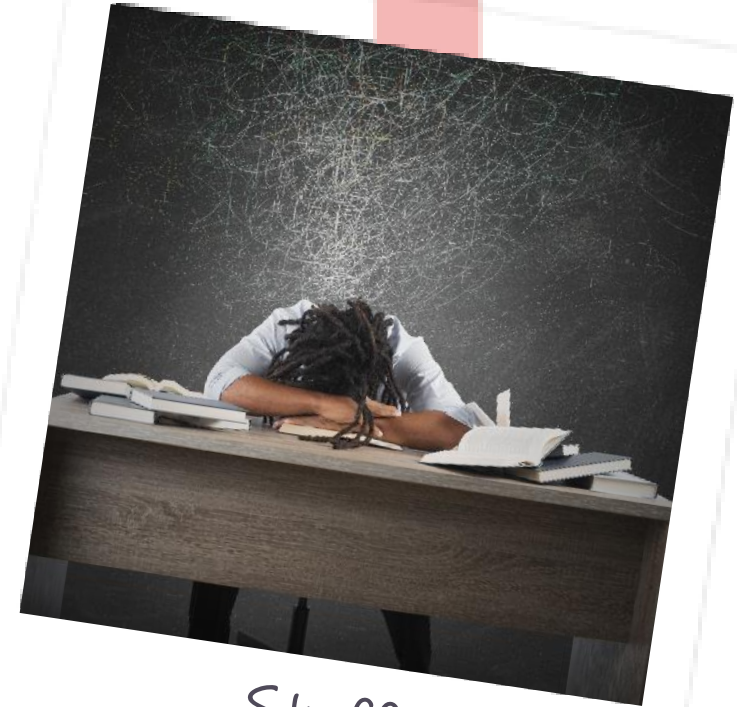


How Are Students & Staff Feeling?



Students

Stress
Anxiety
Isolation
Loneliness
Overwhelm
Grief
Fear



Staff



Collaboration is Key



Law Enforcement &
First Responders

You know your facility and
your procedures

Cross-functional
Departments

Everyone has a role

Top-down
Modeling

Establish a culture of
safety



A Culture of Safety



Empowered
Staff



Transferrable
Life Skills



Productive
Environment



Reduced
Risk



Poll Question

How confident are you that your school is prepared for effective collaboration?

- Very confident
- Fairly confident
- Not confident
- Unsure



The State of Student Mental Health

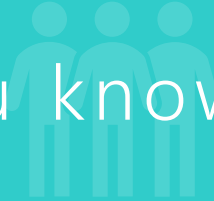


Collegiate Mental Health Statistics

- 64% of students **drop out of college because of mental health** problems.
- About **75% of mental illnesses** appear by the age of 24.
- During COVID-19, **nine in 10 students have experienced** negative mental health symptoms.
- 48% of students believe that **COVID-19 has impacted** their education and mental health.
- **41% of US college students** have depression.
- 33% of students who receive mental health services **consider suicide**.
- **Between 2% and 8%** of college students are diagnosed with ADHD.



Students you know and expect



Students you didn't expect

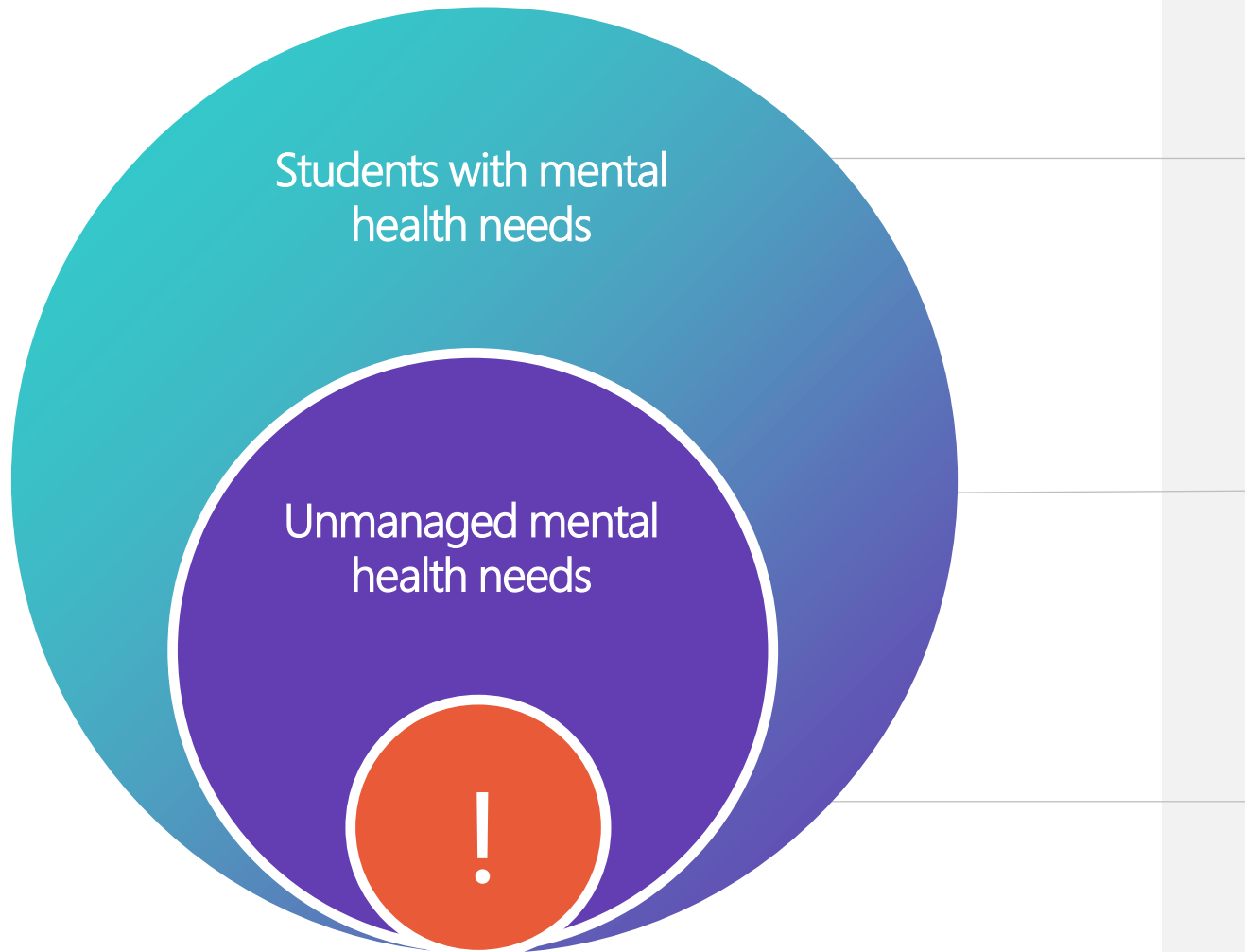


Students on the verge

LIMITED STAFF

LIMITED RESOURCES

Identifying the Focal Point



Most students who have mental health needs **do not** pose a threat to themselves and/or others.

Students who do pose a threat to themselves and/or others **need to be identified early** and provided with intervention and mental health support.

There is a **significant link** between unmanaged mental health and violence.

Be Prepared to Act

The question is not if, but when a student will need mental health support.

- Understand the signs of student withdrawal
- Equip staff to talk to students about suicide
- Have an assessment plan and team in place
- Know where to refer students for help

Poll Question

Does your school have an effective plan in place to support student mental health needs?

- **Yes** – we have a plan to identify and report concerns, as well as resources to offer the student in need
- **Partially** – we have a process for reporting but are not sufficiently prepared to support the student
- **No** – we are not trained or equipped to support students in crisis



A Comprehensive Approach to Threat Detection & Prevention



Solutions that Work Better Together

Behavioral Threat Assessment & Suicide Prevention Training

Anonymous Tip Reporting System

Digital Warning Sign Detection Software

Behavioral Threat/Suicide & Mental Health Case Management Software

What is Threat Assessment?



Threat assessment is a problem-solving approach to violence prevention that involves assessment & intervention with students who have threatened violence in some way.

Note: This can range from very low-level threats (Transient) to a high-level threats (Very Serious Substantive).

- 75% - 85% of threat assessment case are Transient



What is the Purpose of Threat Assessment?



1. Prevent violence
2. Help troubled students
3. Avoid over-reactions and under-reactions to student misbehavior

Turn Data into Awareness & Action

How technology can convert content from digital conversations into safety-related awareness about your school with the following process:

Identify
& Scan

Assess
& Analyze

Connect
& Validate

Inform
& Engage

Anonymous Tip Reporting

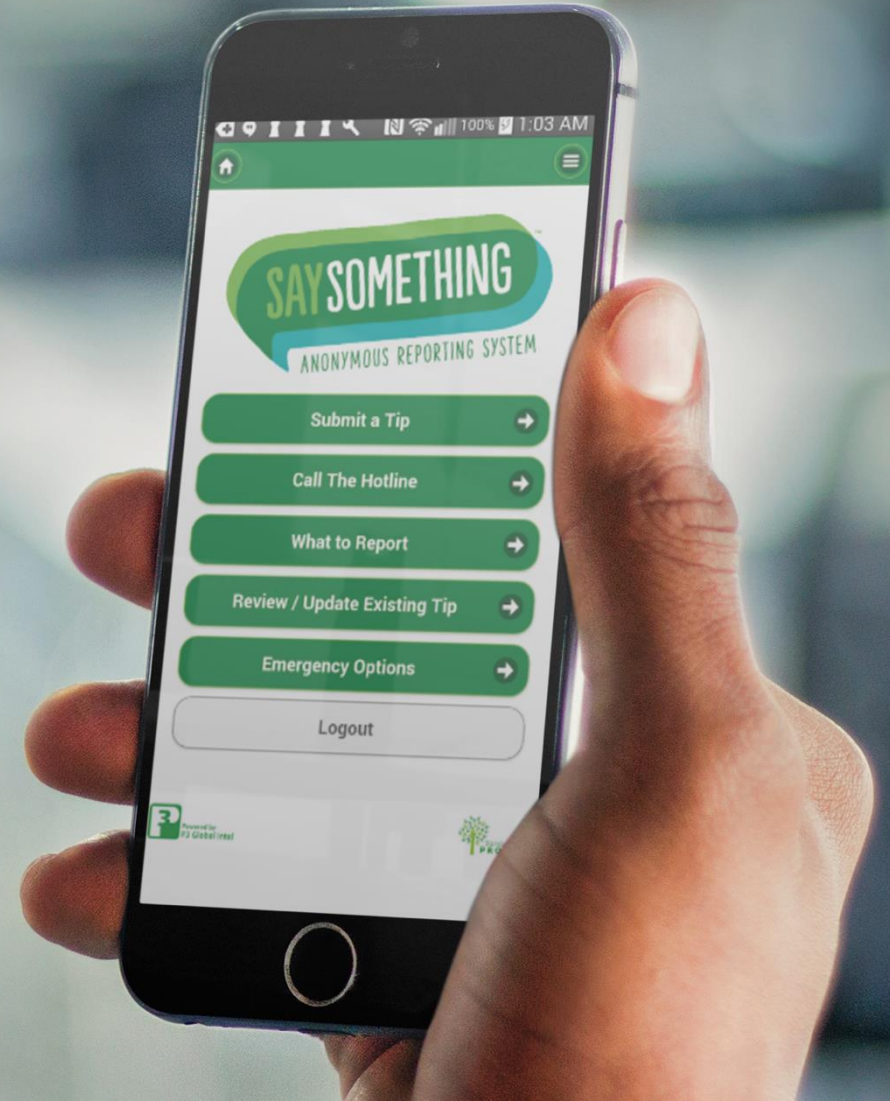
Your students are your biggest eyes and ears



Students are in the best position to identify and report concerning behaviors displayed by classmates through anonymous tips.

MUST HAVES

- 24/7 monitoring
- Anonymous 2-way dialogue with tipster
- Real-time inter-team communication
- Easy visibility and access from school website (get app or submit tip)



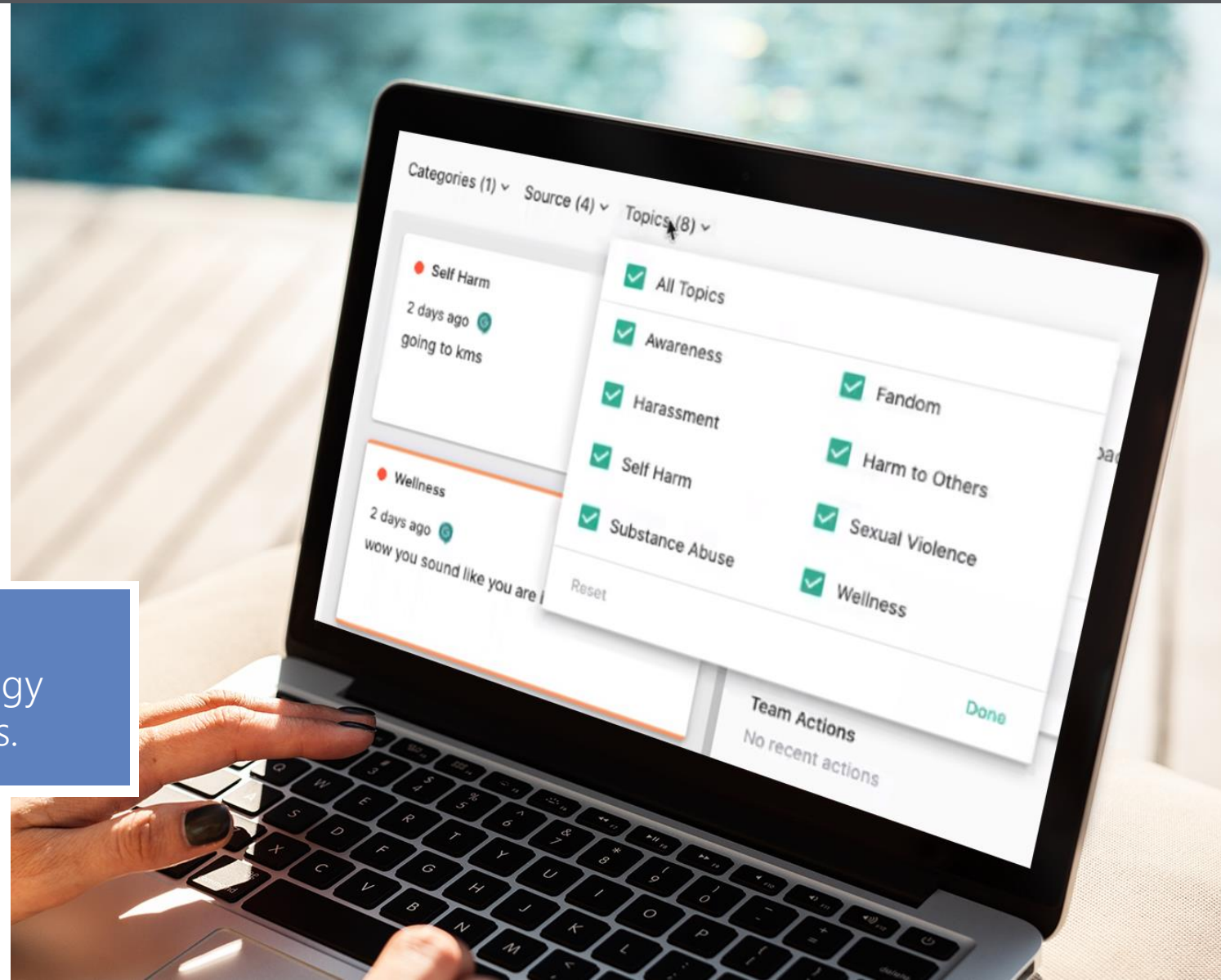
Digital Warning Sign Detection



Leakage is always present in harm to self and harm to others!

- Detect concerning content in school-issued accounts
- Review early warning signs
- Take immediate action

Digital media is a primary source of communication. Machine learning technology helps schools detect the early warning signs.



Poll Question

How comprehensive is your school's approach to threat detection & prevention?

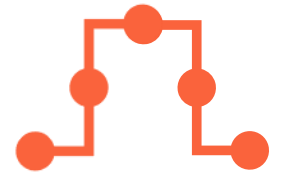
- I'm not sure what our approach is
- We only utilize a single solution
- We have multiple solutions in place but there are still gaps we need to fill
- I feel mostly confident in our approach
- Fully comprehensive



Strategies to Encourage Student Participation



Violence Against Self and Others is Preventable. Schools Must Take a Comprehensive Approach:



Students are in the best position to **identify and report** concerning behaviors displayed by their classmates.

Schools should **intervene immediately**, before a student's behavior warrants legal and/or other consequences.

Assessments for students who are in distress and pose a threat will greatly reduce violence.

There is a **significant need** for mental health identification, intervention, and management.

Connecting the Dots / return to school / ongoing management / re-assessment

Next Steps

If you interested in connecting with a Navigate360 safety consultant to learn more about our comprehensive solutions, please share your contact information in the chat.



Q&A with Joe Hendry, PSP, CLEE

Thank You!